



THE MAPLES AT NESS SIDE

INVERNESS | 2 TO 4 BEDROOM HOMES

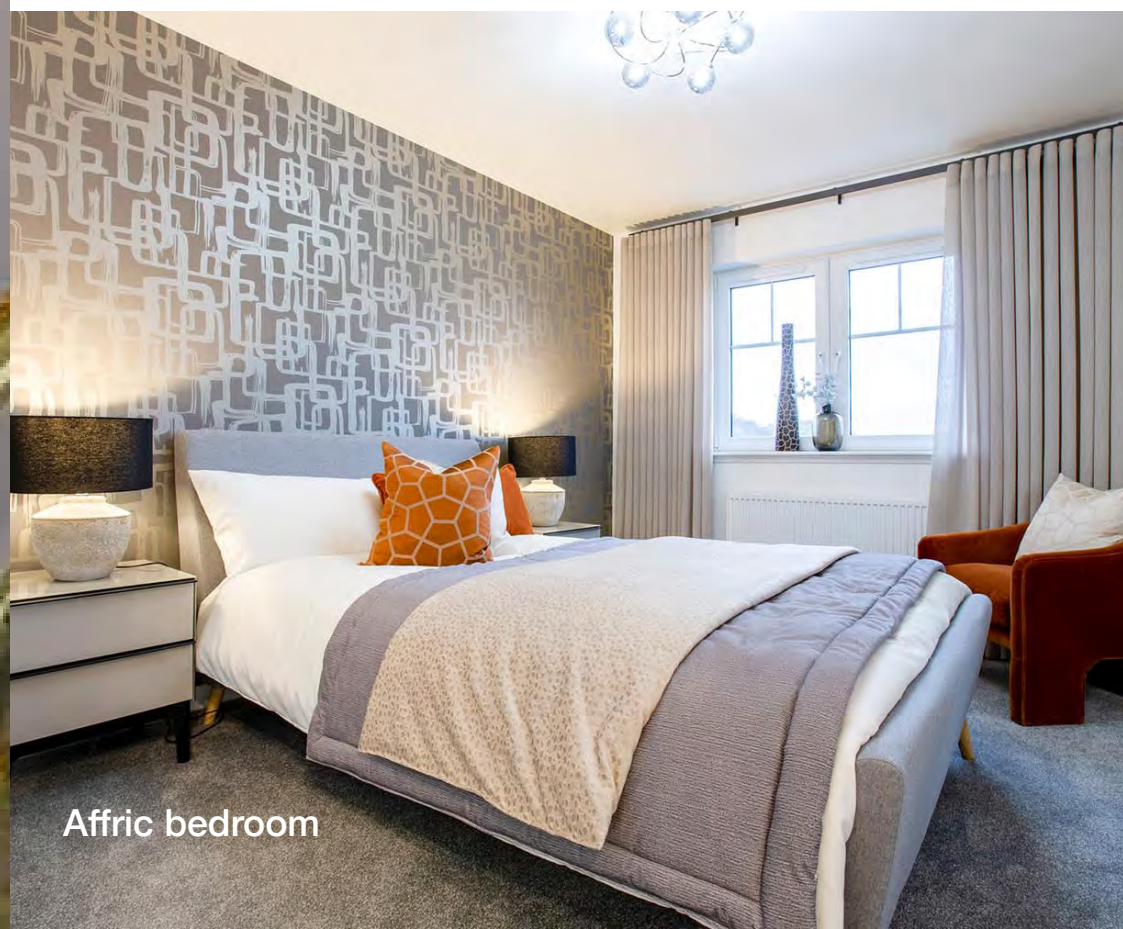
BUILDING ON
100
Years
EXPERIENCE



The Maples streetscene

We are absolutely delighted with our new home at The Maples at Ness Side. The house is beautiful and has been built to an extremely high standard.

Purchaser at The Maples



Affric bedroom

Ness Side is unique. It is city living with the countryside on your doorstep...

For more than 100 years, Tulloch Homes has been building thoughtfully designed, well-constructed homes to the highest specification.

The Maples at Ness Side, Inverness, offers stunning 2, 3 & 4 bedroom homes providing an unrivalled selection in a perfect setting.

Set amidst mature trees, timber trails and cycle paths, it is a spectacular riverside neighbourhood, a gateway to the great outdoors within walking distance of the amenities of a vibrant, family-friendly city.

The area offers schools, shops, restaurants, leisure facilities and outdoor activities including a golf course and swimming pool. Also nearby, The River Ness, Loch Ness and the Caledonian Canal, offer endless opportunities and make stunning backdrops for long walks.

All homes are built to Tulloch Homes' premier specification – with stylish finishes, quality kitchens, bedrooms and bathrooms – and, for peace of mind, all homes come with a 10-year NHBC warranty.

Overview of The Maples at Ness Side

The perfect space to call your own

The Maples at Ness Side is set within mature woodland with inviting recreational spaces, parks as well as timber and stone seating areas – it's hard to believe the vibrant city centre of Inverness is just over a mile from Ness Side. This is city living – complemented by the tranquillity of the countryside.

Cycle paths and walking trails take you from your door into some of the Highlands' most stunning scenery – as well as to both the leisure and essential amenities expected of a thriving, active city.

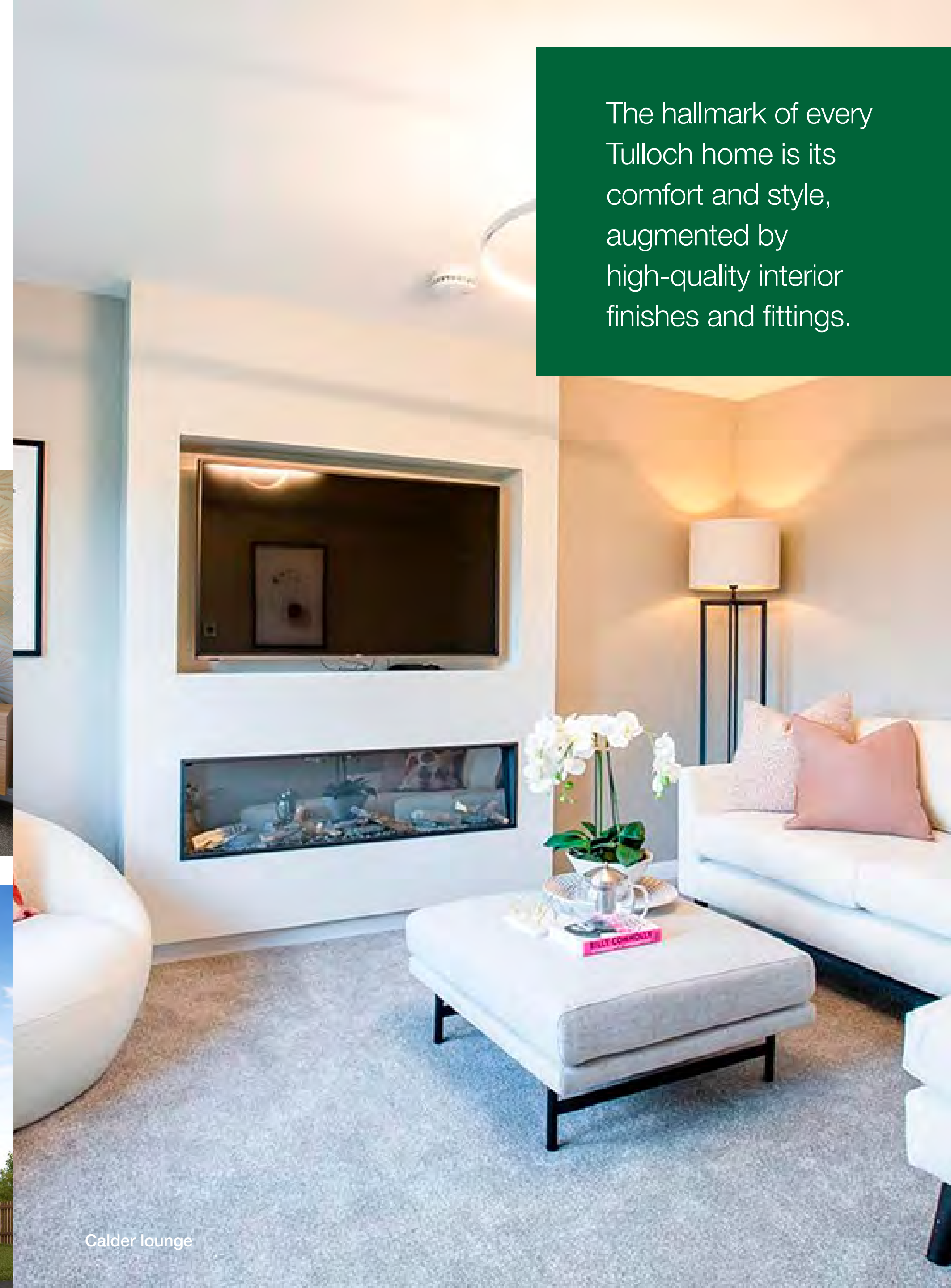
This connection with nature makes Ness Side special. It encourages lifestyle-centred, alfresco living where families enjoy the natural environment and generations young and old thrive.



Calder bedroom



Calder exterior



Calder lounge

The hallmark of every Tulloch home is its comfort and style, augmented by high-quality interior finishes and fittings.



Affric kitchen



Affric lounge



Affric bedroom

Building on 100 years of excellence.

A proud reputation for creating stylish, high specification homes in carefully chosen locations.

At Tulloch Homes we are proud of our reputation for creating enduring, stylish, high specification homes in carefully chosen locations. For over 100 years we have worked to exacting standards and with a commitment to quality, to deliver a home you can be proud of.

Ness Side brings together all our experience and expertise and offers an unrivalled selection of stylish 2, 3 and 4 bedroom homes built with traditional skills, and respect for the environment, in an outstanding location.

For absolute peace of mind all homes benefit from our 10-year NHBC Buildmark warranty.

As the leading homebuilder in the Highlands, we believe Ness Side to be a truly special place to live. Designed by leading architects and built to precise Tulloch standards using the finest materials – and situated close to the spectacular River Ness – the development will set new standards for what to expect from an Inverness community.

Choosing a brand new Tulloch home is your first step towards owning a home that makes you truly proud.

APARTMENT COLLECTION

The Heather and The Bracken

2 bedroom apartments

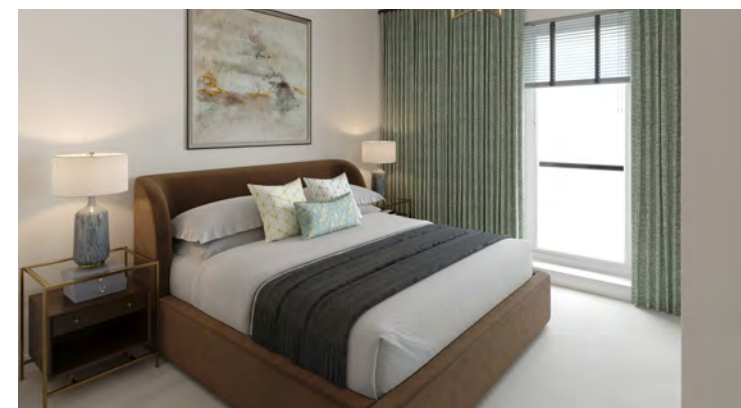


www.tulloch-homes.com

 Tulloch Homes



The Heather and The Bracken are an exclusive range of stunning two bedroom apartments, set at The Maples at Ness Side, Inverness



THE HEATHER

2 bedroom apartment

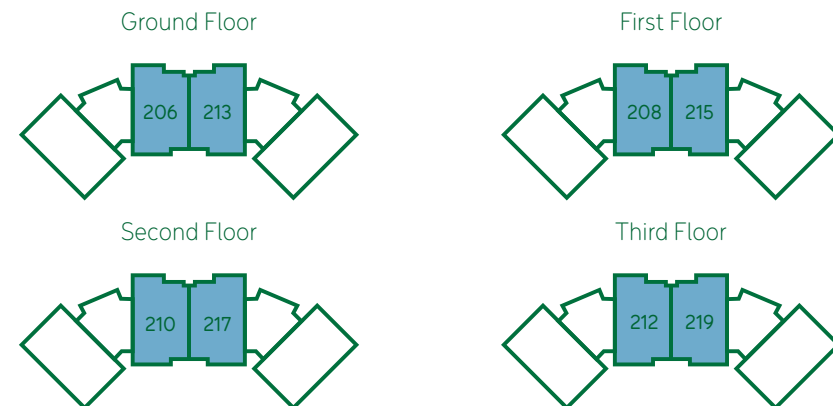
The Heather is a luxury, well appointed two bedroom apartment offering a lounge with balcony on upper floors or enclosed terrace on the ground floor.

The kitchen/dining room accessed from the lounge features a stylish kitchen designed by Ashley Ann, complete with a range of appliances by Bosch including oven, induction hob, washer dryer, fridge freezer and dishwasher.

Bedroom 1 benefits from an en suite shower room and both bedrooms include fitted wardrobes.

The bathroom, located off the hall, offers fitted vanity units for storage, along with a bath and overhead shower. Two storage cupboards are also located in the hall.

These attractive apartments benefit from communal lift and stair access.

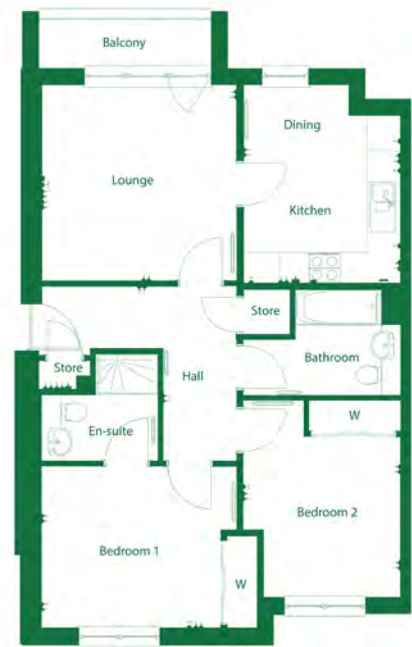


THE HEATHER

Ground Floor



Upper Floors



The Heather

Lounge	3.85m x 3.83m	12'7" x 12'6"
Kitchen/Dining	3.90m x 3.09m	12'9" x 10'1"
Bedroom 1	3.53m x 3.18m	11'6" x 10'5"
En Suite	2.26m x 1.35m	7'4" x 4'4"
Bedroom 2	3.17m x 2.69m	10'4" x 8'9"
Bathroom	3.14m x 2.10m	10'3" x 6'9"

Windows vary between ground and upper floor apartments. Please speak with sales consultant for details.

THE BRACKEN

2 bedroom apartment

The Bracken is a stunning two-bedroom apartment benefitting from an open plan lounge/kitchen with balcony on upper floors or enclosed terrace on the ground floor.

The luxury kitchen by Ashley Ann is well appointed with a full range of integrated Bosch appliances, including oven, induction hob, fridge freezer and dishwasher.

Both bedrooms feature fitted wardrobes, with the main bedroom offering an en suite shower room.

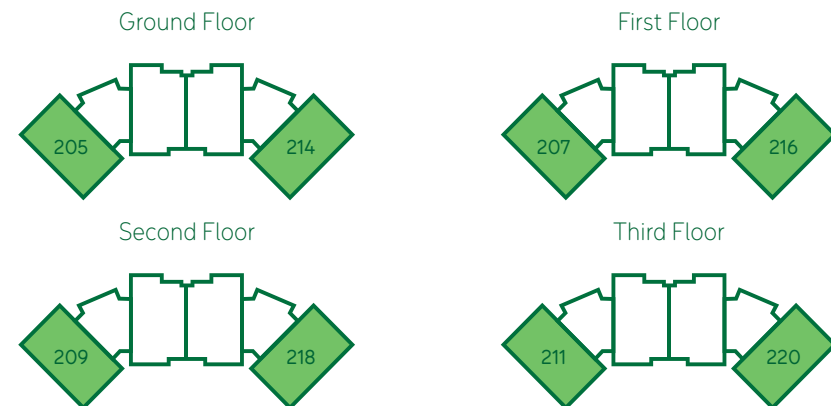
The bathroom, located off the hall, offers fitted vanity units for storage, along with a bath and overhead shower.

The Bracken also has a separate utility room and storage cupboards.

These attractive apartments benefit from communal lift and stair access.



Bracken upper floor kitchen/lounge



THE BRACKEN

Ground Floor



Upper Floors



The Bracken

Kitchen/Lounge	6.71m x 4.35m	22'0" x 14'3"
Bedroom 1	3.26m x 2.68m	10'8" x 8'9"
En Suite	2.21m x 1.25m	7'3" x 4'1"
Bedroom 2	3.22m x 2.70m	10'6" x 8'10"
Bathroom	2.97m x 2.15m	9'7" x 7'1"

Windows vary between ground and upper floor apartments. Please speak with sales consultant for details.

Specification

Kitchen

- High quality kitchen supplied and fitted by Ashley Ann
- Slimline worktop
- A range of integrated Bosch appliances including:
 - Stainless steel electric oven
 - Induction hob
 - Fridge freezer
 - Washer/Dryer (please note, this is free-standing in Bracken utility room)
 - Dishwasher
- Integrated extractor hood
- Full height laminate splashback
- Blanco Legra Silgranit sink
- Integrated under cabinet lighting
- Glass detail in drawers

Bathroom

- Contemporary sanitary ware from Ideal Standard:
 - Semi-recessed wash hand basin with chrome mixer tap and clicker waste
 - Back to wall WC with concealed cistern and push button flush
 - Arc bath with thermostatic pillar mounted bath shower mixer and curved bath screen
 - Ceramic wall tiling above vanity unit and full height above bath/around shower, finished with a chrome tile trim
 - Chrome heated towel rail
 - Feature mirror
 - Vanity units create a sleek finish to the contemporary bathroom

En Suite

- Contemporary sanitary ware from Ideal Standard:
 - Semi-recessed wash hand basin with chrome mixer tap and clicker waste
 - Back to wall WC with concealed cistern and push button flush
 - Mira Jump electric shower with slider pole
 - Shower tray with slider shower door/screen
 - Ceramic wall tiling above wash hand basin and full height to shower, finished with a chrome tile trim
 - Chrome heated towel rail
 - Feature mirror
 - Vanity units create a sleek finish to the contemporary en suite

Internal Finishes and Decoration

- Flooring included throughout
- Castalla Viena pre-finished oak fire doors, where applicable
- Polished chrome ironmongery
- Walls finished with matt emulsion in light grey, apart from bathroom, en suite and kitchen areas which will be white
- Ceilings finished with matt emulsion in off white
- Woodwork finished in brilliant white

Fitted wardrobes

- Sliding mirrored wardrobe doors, where applicable
- Shelf and chrome hanging rail to wardrobes, where applicable

Electrics and Connectivity

- TV / satellite point in lounge and TV point to bedroom 1
- USB double socket in kitchen and bedroom 1
- Master BT point installed
- Fibre broadband to the property (internet speed subject to supplier – customer to arrange own supplier / installation)
- Hard-wired mains smoke and heat alarms installed, with battery back-up
- Pendant light fittings throughout with low energy bulbs fitted

Security and External Details

- Internal flat entrance fire door with multi-point locking system, spy viewer, smoke and intumescent seals, door closer and letter plate
- Double glazed windows with lockable handles, with obscured glazing to bathroom
- Audio entry system to stairwell entrance doors
- PVCu cladding system to fascias and soffits
- Guttering and downpipes in black

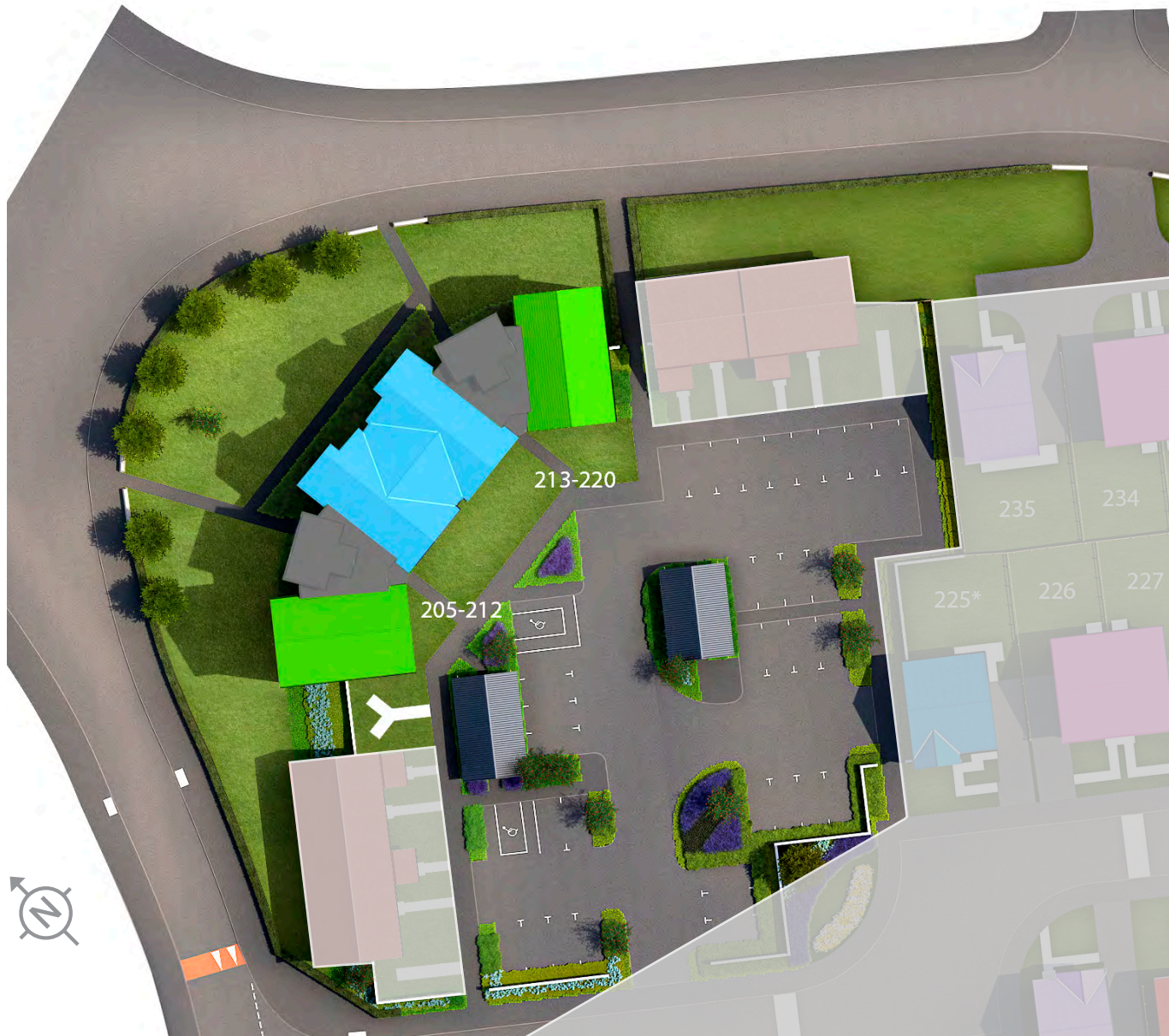
Plumbing and Heating

- Gas heating and photovoltaic panels

Choice of inclusions is subject to construction stage. We operate a policy of continuous product development, and specification, floor plans and individual features such as windows, garages and elevational treatments may vary from time to time, as may heating and electrical layouts. Consequently these particulars should be treated as general guidance only and cannot be relied upon as accurately describing any of the areas or items prescribed. Nor do they constitute a contract, part of a contract or a warranty. All images are used for illustrative purposes only. August 2025

The Maples Ness Side

www.tulloch-homes.com

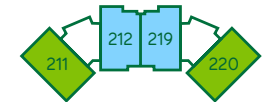


The Heather
2 bedroom apartments.

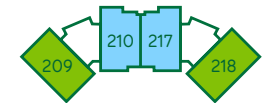


The Bracken
2 bedroom apartments.

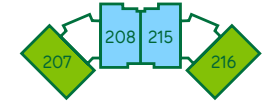
Third Floor



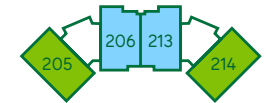
Second Floor



First Floor



Ground Floor



The Maples on SatNav: IV2 6FU

These particulars are for illustration only. We operate a policy of continuous product development, and specification and individual features such as windows, garages and elevational treatments may vary from time to time, as may heating and electrical layouts. Consequently these particulars should be treated as general guidance only and cannot be relied upon as accurately describing any of the areas or items. Nor do they constitute a contract, part of a contract or a warranty. We make no guarantees about the tenure of any homes sold on each development and they are subject to change without consultation.

THE MAPLES

The Orrin

2 bedroom semi detached home





THE ORRIN

2 bedroom semi detached home

The Orrin is a lovely 2 bedroom home with accommodation over two levels.

The open plan Ashley Ann kitchen/dining area features French doors leading to the turfed rear garden. The front aspect lounge, along with a handy WC and storage cupboard, is also located on this level. Upstairs, there are two double bedrooms and a family bathroom finished with vanity units.



First Floor

Bedroom 1	4.20m x 3.00m	13' 8" x 9' 8"
Bedroom 2	3.50m x 3.03m	11' 5" x 9' 9"
Bathroom	2.01m x 1.90m	6' 6" x 6' 3"



Ground Floor

Lounge	4.20m x 3.70m	13' 8" x 12' 1"
Dining/Kitchen	4.20m x 3.06m	13' 8" x 10' 0"
Cloakroom	2.07m x 1.25m	6' 8" x 4' 1"

Specification

Kitchen

- High quality kitchen supplied and fitted by Ashley Ann
- Worktop with matching upstand
- A range of integrated Bosch appliances including:
 - Stainless steel electric oven
 - Frameless 4 ring ceramic hob
- Glass splashback behind hob
- Stainless steel extractor hood
- Stainless steel inset sink with 1.5 bowl
- Under wall-unit lighting

Cloakroom

- Contemporary sanitary ware from Ideal Standard:
 - Wash hand basin with chrome mixer tap with clicker waste
 - Close coupled WC and cistern with push button flush
- Ceramic wall tiling above wash hand basin, finished with a chrome tile trim
- Feature mirror

Bathroom

- Contemporary sanitary ware from Ideal Standard:
 - Semi-recessed wash hand basin with chrome mixer tap and clicker waste
 - Back to wall WC with concealed cistern and push button flush
 - Arc bath with thermostatic pillar mounted bath shower mixer and curved bath screen
- Ceramic wall tiling above vanity unit and full height above bath/around shower with chrome tile trim
- Feature mirror
- Vanity units create a sleek finish to the contemporary bathroom

Internal Finishes and Decoration

- Premdor white modern ladder moulded internal doors, where applicable
- Polished chrome ironmongery
- Push-up ceiling hatch providing loft access
- Walls finished with matt emulsion in light grey, apart from kitchen, bathroom and cloakroom which will be white
- Ceilings finished with matt emulsion in off white
- Woodwork finished in brilliant white
- Staircase finished with white painted spindles and oak handrail

Electrics and Connectivity

- TV/satellite point in lounge and TV point to bedroom 1
- USB double socket in kitchen and bedroom 1
- Telephone point installed
- Fibre broadband to the property (internet speed subject to supplier – customer to arrange supplier/connection)
- Hard-wired mains smoke and heat alarms installed, with battery back-up
- Pendant light fittings throughout with low energy bulbs fitted
- Door bell fitted at front door

Security and External Details

- Front door with multi-point locking system, chrome handles, spy viewer, low access threshold and letter plate
- French doors with multi-point locking system opening onto patio
- Exterior lights to front and rear
- Double glazed windows with lockable handles
- PVCu cladding system on fascias and soffits
- Marley Deepflow guttering and downpipes
- Paving to front door
- Turfed garden
- 1800mm timber screen fencing between rear gardens and at rear boundary
- External water tap
- Brabantia rotary drier

Plumbing and Heating

- Air source heat pump

Choice of inclusions is subject to construction stage. We operate a policy of continuous product development, and specification, floor plans and individual features such as windows, garages and elevational treatments may vary from time to time, as may heating and electrical layouts. Consequently these particulars should be treated as general guidance only and cannot be relied upon as accurately describing any of the areas or items prescribed. Nor do they constitute a contract, part of a contract or a warranty. All images are used for illustrative purposes only. January 2026.

THE MAPLES

The Corran

3 bedroom semi-detached home





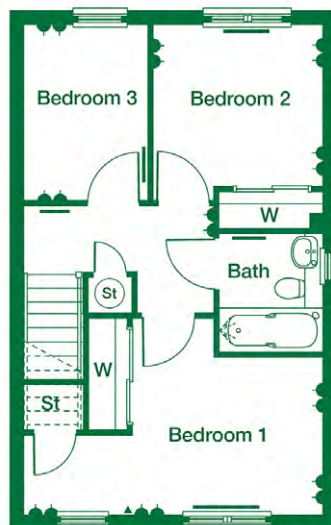
THE CORRAN

3 bedroom semi-detached home

The Corran is an impressive three bedroom home comprising a quality kitchen by Ashley Ann.

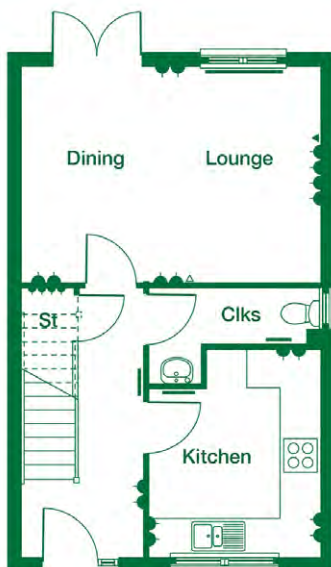
The rear aspect open plan lounge/dining room provides flexible living space, and benefits from French doors leading to the rear turfed garden. A cloakroom is located off the hall.

Upstairs, bedrooms one and two include fitted wardrobes, with an additional third bedroom on this level. A family bathroom with over bath shower, vanity units, feature mirror and contemporary tiling, complete the look of this fabulous home.



First Floor

Bedroom 1	4.96m x 2.69m	16' 3" x 8' 8"
Bedroom 2	2.81m x 2.69m	9' 2" x 8' 8"
Bedroom 3	2.95m x 2.05m	9' 7" x 6' 7"
Bathroom	1.95m x 1.71m	6' 4" x 5' 6"



Ground Floor

Lounge/Dining	4.96m x 3.67m	16' 3" x 12' 0"
Kitchen	3.43m x 2.86m	11' 3" x 9' 4"
Cloakroom	2.83m x 1.58m	9' 3" x 5' 2"

Specification

Kitchen

- High quality kitchen supplied and fitted by Ashley Ann
- Worktop with matching upstand
- A range of integrated Bosch appliances including:
 - Stainless steel electric oven
 - Frameless 4 ring ceramic hob
- Glass splashback behind hob
- Stainless steel extractor hood
- Stainless steel inset sink with 1.5 bowl
- Under wall-unit lighting

Cloakroom

- Contemporary sanitary ware from Ideal Standard:
 - Wash hand basin with chrome mixer tap and clicker waste
 - Close coupled WC and cistern with push button flush
- Ceramic wall tiling above wash hand basin, finished with a chrome tile trim
- Feature mirror

Bathroom

- Contemporary sanitary ware from Ideal Standard:
 - Semi-recessed wash hand basin with chrome mixer tap and clicker waste
 - Back to wall WC with concealed cistern and push button flush
 - Arc bath with thermostatic pillar mounted bath shower mixer and curved bath screen
- Ceramic wall tiling above vanity unit and full height above bath/around shower with chrome tile trim
- Feature mirror
- Vanity units create a sleek finish to the contemporary bathroom

Internal Finishes and Decoration

- Premdor white modern ladder moulded internal doors, where applicable
- Premdor white smooth 5 light glazed doors to the lounge and kitchen
- Polished chrome ironmongery
- Push-up ceiling hatch providing loft access
- Walls finished with matt emulsion in light grey, apart from kitchen, bathroom and cloakroom which will be white
- Ceilings finished with matt emulsion in off white
- Woodwork finished in brilliant white
- Staircase finished with white painted spindles and oak handrail

Fitted wardrobes and Storage

- Sliding mirrored wardrobe doors, where applicable
- Shelf and chrome hanging rail to wardrobes, where applicable

Electrics and Connectivity

- TV/satellite point in lounge and TV point to bedroom 1
- USB double socket in kitchen and bedroom 1
- Telephone point installed
- Fibre broadband to the property (internet speed subject to supplier – customer to arrange supplier/connection)
- Hard-wired mains smoke and heat alarms installed, with battery back-up
- Pendant light fittings throughout with low energy bulbs fitted
- Door bell fitted at front door

Security and External Details

- Front door with multi-point locking system, chrome handles, spy viewer, low access threshold and letter plate
- French doors with chrome handles and multi-point locking system opening on to patio
- Exterior lights to front and rear
- Double glazed windows with lockable handles
- PVCu cladding system on fascias and soffits
- Marley Deepflow guttering and downpipes
- Paving to front door
- Turfed garden
- 1800mm timber screen fencing between rear gardens and at rear boundary
- External water tap
- Brabantia rotary drier

Plumbing and Heating

- Air source heat pump

Choice of inclusions is subject to construction stage. We operate a policy of continuous product development, and specification, floor plans and individual features such as windows, garages and elevational treatments may vary from time to time, as may heating and electrical layouts. Consequently these particulars should be treated as general guidance only and cannot be relied upon as accurately describing any of the areas or items prescribed. Nor do they constitute a contract, part of a contract or a warranty. All images are used for illustrative purposes only. November 2024.

THE MAPLES

The Torrin

3 bedroom semi detached home



 Tulloch Homes

www.tulloch-homes.com

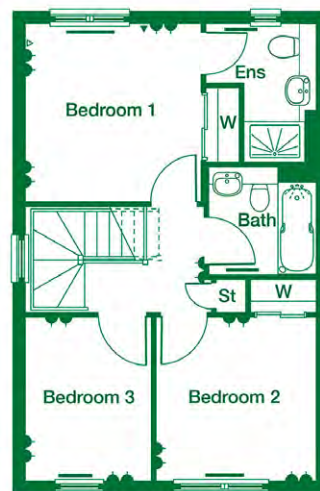


THE TORRIN

3 bedroom semi detached home

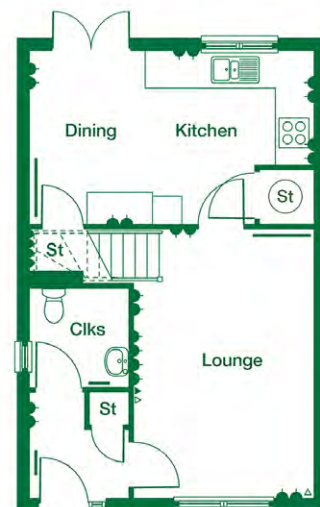
The Torrin is a lovely 3 bedroom semi-detached home featuring a contemporary open plan kitchen/dining room.

The high quality kitchen by Ashley Ann features Bosch appliances and French doors leading to the patio area in the turfed rear garden. A separate lounge located to the front of the property provides a great space to relax and unwind. Upstairs, there is 3 bedrooms, two of which feature fitted wardrobes. Bedroom 1 benefits from en suite shower room which together with the bathroom, features fitted vanity furniture to provide a smart, streamlined finish.



First Floor

Bedroom 1	3.23m x 3.16m	10' 6" x 10' 4"
En suite	2.51m x 1.96m	8' 2" x 6' 4"
Bedroom 2	2.97m x 2.93m	9' 7" x 9' 6"
Bedroom 3	2.97m x 2.25m	9' 7" x 7' 4"
Bathroom	1.98m x 1.96m	6' 5" x 6' 4"



Ground Floor

Lounge	5.02m x 3.35m	16' 5" x 11' 0"
Dining/Kitchen	5.29m x 3.20m	17' 4" x 10' 5"
Cloakroom	1.85m x 1.81m	6' 1" x 5' 9"

Specification

Kitchen

- High quality kitchen supplied and fitted by Ashley Ann
- Worktop with matching upstand
- A range of integrated Bosch appliances including:
 - Stainless steel electric oven
 - Frameless 4 ring ceramic hob
- Glass splashback behind hob
- Stainless steel extractor hood
- Stainless steel inset sink with 1.5 bowl
- Under wall-unit lighting

Cloakroom

- Contemporary sanitary ware from Ideal Standard:
 - Wash hand basin with chrome mixer tap with clicker waste
 - Close coupled WC and cistern with push button flush
- Ceramic wall tiling above wash hand basin, finished with a chrome tile trim
- Feature mirror

Bathroom

- Contemporary sanitary ware from Ideal Standard:
 - Semi-recessed wash hand basin with chrome mixer tap and clicker waste
 - Back to wall WC with concealed cistern and push button flush
 - Arc bath with matching bath panel and dual control taps
- Ceramic wall tiling above vanity unit and bath, finished with chrome tile trim
- Feature mirror
- Vanity units create a sleek finish to the contemporary bathroom

En suite

- Contemporary sanitary ware from Ideal Standard:
 - Semi-recessed wash hand basin with chrome mixer tap and clicker waste
 - Back to wall WC with concealed cistern and push button flush
- Mira Jump electric shower with slider pole
- Shower tray with slider shower door/screen
- Ceramic wall tiling above wash handbasin and full height to shower, finished with a chrome tile trim
- Feature mirror
- Vanity units create a sleek finish to the contemporary en-suite

Internal Finishes and Decoration

- Premdor white modern ladder moulded internal doors, where applicable
- Premdor white smooth 5 light glazed doors to the lounge and kitchen
- Polished chrome ironmongery
- Push-up ceiling hatch providing loft access
- Walls finished with matt emulsion in light grey, apart from kitchen, bathroom, en suite and cloakroom which will be white
- Ceilings finished with matt emulsion in off white
- Woodwork finished in brilliant white
- Staircase finished with white painted spindles and oak handrail

Fitted wardrobes and Storage

- Sliding mirrored wardrobe doors, where applicable
- Shelf and chrome hanging rail to wardrobes, where applicable
- Storage cupboards located in hall and landing

Electrics and Connectivity

- TV/satellite point in lounge and TV point to bedroom 1
- USB double socket in kitchen and bedroom 1
- Telephone point installed
- Fibre broadband to the property (internet speed subject to supplier – customer to arrange supplier/connection)
- Hard-wired mains smoke and heat alarms installed, with battery back-up
- Pendant light fittings throughout with low energy bulbs fitted
- Door bell fitted at front door

Security and External Details

- Front door with multi-point locking system, chrome handles, spy viewer, low access threshold and letter plate
- French doors with chrome handles and multi-point locking system opening on to patio
- Exterior lights to front and rear
- Double glazed windows with lockable handles, with obscured glazing to en suite and cloakroom
- PVCu cladding system on fascias and soffits
- Marley Deepflow guttering and downpipes
- Paving to front door
- Turfed gardens to the front and rear
- 1800mm timber screen fencing between rear gardens and at rear boundary
- External water tap
- Brabantia rotary drier

Plumbing and Heating

- Air source heat pump

Choice of inclusions is subject to construction stage. We operate a policy of continuous product development, and specification, floor plans and individual features such as windows, garages and elevational treatments may vary from time to time, as may heating and electrical layouts. Consequently these particulars should be treated as general guidance only and cannot be relied upon as accurately describing any of the areas or items prescribed. Nor do they constitute a contract, part of a contract or a warranty. All images are used for illustrative purposes only. June 2024.

THE MAPLES

The Calder

3 bedroom detached home



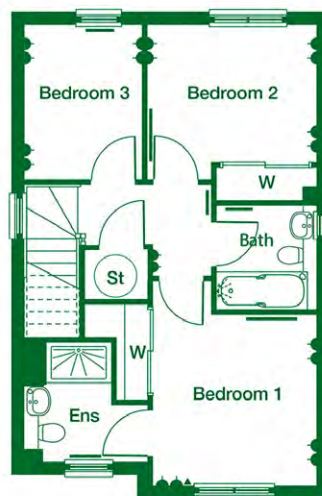


THE CALDER

3 bedroom detached home

The Calder is a beautiful 3 bedroom home ideal for family living.

The high quality open plan kitchen/dining room features a selection of Bosch appliances and French door leading to the turfed rear garden. The property comprises two double bedrooms with fitted wardrobe facilities, with bedroom 1 also benefitting from en suite shower room. There is a further bedroom on the first floor, as well as the family bathroom which features a shower over the bath and fitted vanity units to provide a sleek finish.



First Floor

Bedroom 1	3.22m x 3.03m	10' 6" x 9' 9"
En suite	2.22m x 1.59m	7' 3" x 5' 2"
Bedroom 2	3.16m x 2.54m	10' 4" x 8' 3"
Bedroom 3	2.88m x 2.18m	9' 4" x 7' 1"
Bathroom	2.15m x 1.84m	7' 1" x 6' 0"



Ground Floor

Lounge	4.45m x 3.31m	14' 6" x 10' 9"
Dining/Kitchen	5.44m x 2.86m	17' 8" x 9' 4"
Cloakroom	2.29m x 1.30m	7' 6" x 4' 3"

Specification

Kitchen

- High quality kitchen supplied and fitted by Ashley Ann
- Worktop with matching upstand
- A range of integrated Bosch appliances including:
 - Stainless steel electric oven
 - Frameless 4 ring ceramic hob
 - Integrated fridge freezer
- Glass splashback behind hob
- Stainless steel extractor hood
- Stainless steel inset sink with 1.5 bowl
- Under wall-unit lighting

Cloakroom

- Contemporary sanitary ware from Ideal Standard:
 - Wash hand basin with chrome mixer tap and clicker waste
 - Close coupled WC and cistern with push button flush
- Ceramic wall tiling above wash hand basin, finished with a chrome tile trim
- Feature mirror

Bathroom

- Contemporary sanitary ware from Ideal Standard:
 - Semi-recessed wash hand basin with chrome mixer tap and clicker waste
 - Back to wall WC with concealed cistern and push button flush
 - Arc bath with thermostatic pillar mounted bath shower mixer and curved bath screen
- Ceramic wall tiling above vanity unit and full height above bath/around shower with chrome tile trim
- Feature mirror
- Vanity units create a sleek finish to the contemporary bathroom

En suite

- Contemporary sanitary ware from Ideal Standard:
 - Semi-recessed wash hand basin with chrome mixer tap and clicker waste
 - Back to wall WC with concealed cistern and push button flush
 - Mira Jump electric shower with slider pole
 - Shower tray with slider shower door/screen
- Ceramic wall tiling above wash handbasin and full height to shower, finished with a chrome tile trim
- Feature mirror
- Vanity units create a sleek finish to the contemporary en-suite

Internal Finishes and Decoration

- Premdor white modern ladder moulded internal doors, where applicable
- Premdor white smooth 5 light glazed doors to the lounge and kitchen
- Polished chrome ironmongery
- Push-up ceiling hatch providing loft access
- Walls finished with matt emulsion in light grey, apart from kitchen, bathroom, cloakroom and en suite which will be white
- Ceilings finished with matt emulsion in off white
- Woodwork finished in brilliant white
- Staircase finished with white painted spindles and oak handrail

Fitted wardrobes and Storage

- Sliding mirrored wardrobe doors, where applicable
- Shelf and chrome hanging rail to wardrobes, where applicable
- Storage cupboards located in hall and landing

Electrics and Connectivity

- TV/satellite point in lounge and TV point to bedroom 1
- USB double socket in kitchen and bedroom 1
- Telephone point installed
- Fibre broadband to the property (internet speed subject to supplier – customer to arrange supplier/connection)
- Hard-wired mains smoke and heat alarms installed, with battery back-up
- Pendant light fittings throughout with low energy bulbs fitted
- Door bell fitted at front door

Security and External Details

- Front door with multi-point locking system, chrome handles, spy viewer, low access threshold and letter plate
- French doors with chrome handles and multi-point locking system opening on to patio
- Exterior lights to front and rear
- Double glazed windows with lockable handles with obscured glazing to bathroom, en suite and cloakroom
- PVCu cladding system on fascias and soffits
- Marley Deepflow guttering and downpipes
- Driveway and paving to front door
- Turfed gardens to front and rear
- 1800mm timber screen fencing between rear gardens and at rear boundary
- External water tap
- Brabantia rotary drier

Plumbing and Heating

- Air source heat pump

Choice of inclusions is subject to construction stage. We operate a policy of continuous product development, and specification, floor plans and individual features such as windows, garages and elevational treatments may vary from time to time, as may heating and electrical layouts. Consequently these particulars should be treated as general guidance only and cannot be relied upon as accurately describing any of the areas or items prescribed. Nor do they constitute a contract, part of a contract or a warranty. All images are used for illustrative purposes only. August 2024.

THE MAPLES

The Affric

3 bedroom detached home with garage



 Tulloch Homes

www.tulloch-homes.com



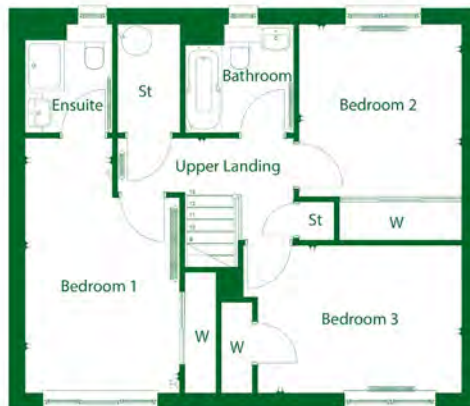
THE AFFRIC

3 bedroom detached home with garage

The Affric is a lovely 3 bedroom detached home with integral garage, and a high specification throughout.

The ground floor comprises an open-plan kitchen/dining room, perfect for entertaining, with French doors leading to the rear garden. The contemporary Ashley Ann kitchen features integrated appliances by Bosch. The integral garage can be accessed from the kitchen/dining room. The WC/cloakroom is also located off the kitchen/dining room and includes a storage cupboard. The lounge is located to the front, providing space to relax and unwind.

Upstairs, the main bedroom benefits from fitted wardrobes, complete with en suite shower room including sleek vanity units and feature mirror. Two further bedrooms, benefiting from built in wardrobe space, and a family bathroom are located on this level, with additional storage, presenting an excellent family home.



First Floor

Bedroom 1	3.78m x 2.99m	12' 4" x 9' 8"
En suite	2.10m x 1.69m	6' 9" x 5' 5"
Bedroom 2	3.34m x 3.15m	11' 0" x 10' 3"
Bedroom 3	3.96m x 2.86m	13' 0" x 9' 4"
Bathroom	2.10m x 2.10m	6' 9" x 6' 9"



Ground Floor

Lounge	4.21m x 3.98m	13' 8" x 13' 1"
Dining/Kitchen	5.37m x 3.03m	17' 6" x 9' 9"
Cloakroom	2.97m x 1.52m	9' 7" x 5' 0"

Specification

Kitchen

- High quality kitchen supplied and fitted by Ashley Ann
- Worktop with matching upstand
- A range of integrated Bosch appliances including:
 - Stainless steel electric oven
 - Frameless 4 ring ceramic hob
 - Integrated fridge freezer
- Glass splashback behind hob
- Stainless steel extractor hood
- Stainless steel inset sink with 1.5 bowl
- Under wall-unit lighting

Cloakroom

- Contemporary sanitary ware from Ideal Standard:
 - Wash hand basin with chrome mixer tap and clicker waste
 - Close coupled WC and cistern with push button flush
- Ceramic wall tiling above wash hand basin, finished with a chrome tile trim
- Feature mirror

Bathroom

- Contemporary sanitary ware from Ideal Standard:
 - Semi-recessed wash hand basin with chrome mixer tap and clicker waste
 - Back to wall WC with concealed cistern and push button flush
 - Arc bath with thermostatic pillar mounted bath shower mixer and curved bath screen
- Ceramic wall tiling above vanity unit and full height above bath/around shower with chrome tile trim
- Feature mirror
- Vanity units create a sleek finish to the contemporary bathroom

En suite

- Contemporary sanitary ware from Ideal Standard:
 - Semi-recessed wash hand basin with chrome mixer tap and clicker waste
 - Close coupled WC with cistern and push button flush
 - Mira Jump electric shower with slider pole
 - Shower tray with slider shower door/screen
- Ceramic wall tiling above wash hand basin and full height to shower, finished with a chrome tile trim
- Feature mirror
- Vanity units create a sleek finish to the contemporary en-suite

Internal Finishes and Decoration

- Premdor white modern ladder moulded internal doors, where applicable
- Premdor white smooth 5 light glazed doors to the lounge and kitchen
- Polished chrome ironmongery
- Push-up ceiling hatch providing loft access
- Walls finished with matt emulsion in light grey, apart from kitchen, bathroom, cloakroom and en suite which will be white
- Ceilings finished with matt emulsion in off white
- Woodwork finished in brilliant white
- Staircase finished with white painted spindles and oak handrail

Fitted wardrobes and Storage

- Sliding mirrored wardrobe doors, where applicable
- Shelf and chrome hanging rail to wardrobes, where applicable
- Storage cupboards located in hall and landing

Electrics and Connectivity

- TV/satellite point in lounge and TV point to bedroom 1
- USB double socket in kitchen and bedroom 1
- Telephone point installed
- Fibre broadband to the property (internet speed subject to supplier – customer to arrange supplier/connection)
- Hard-wired mains smoke and heat alarms installed, with battery back-up
- Pendant light fittings throughout with low energy bulbs fitted
- Door bell fitted at front door

Security and External Details

- Front door with multi-point locking system, chrome handles, spy viewer, low access threshold and letter plate
- French doors with chrome handles and multi-point locking system opening on to patio
- Garage with roller shutter door
- Exterior lights to front and rear
- Double glazed windows with lockable handles with obscured glazing to bathroom, en suite and cloakroom
- PVCu cladding system on fascias and soffits
- Marley Deepflow guttering and downpipes
- Driveway and paving to front door
- Turfed gardens to front and rear
- 1800mm timber screen fencing between rear gardens and at rear boundary
- External water tap
- Brabantia rotary drier

Plumbing and Heating

- Air source heat pump

Choice of inclusions is subject to construction stage. We operate a policy of continuous product development, and specification, floor plans and individual features such as windows, garages and elevational treatments may vary from time to time, as may heating and electrical layouts. Consequently these particulars should be treated as general guidance only and cannot be relied upon as accurately describing any of the areas or items prescribed. Nor do they constitute a contract, part of a contract or a warranty. All images are used for illustrative purposes only. April 2025.

THE MAPLES

The Tweed

4 bedroom detached home



 Tulloch Homes

www.tulloch-homes.com



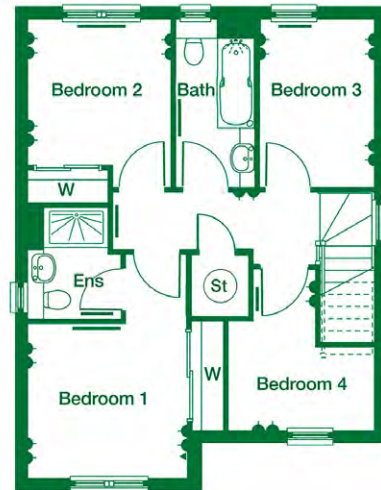
THE TWEED

4 bedroom detached home

The Tweed is a stunning 4 bedroom detached home, with a high specification throughout.

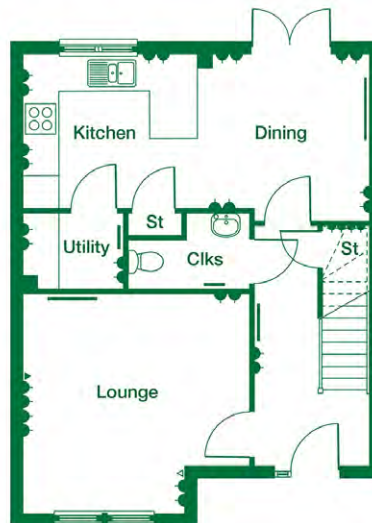
The ground floor comprises an open-plan kitchen/dining room, with flexible space for both casual dining at the breakfast bar and dining space, with French doors leading to the rear garden. There is a separate utility room located off the kitchen, with the WC/cloakroom accessed from the hall.

The lounge is located to the front, providing space to relax and unwind. Upstairs, the main bedroom benefits from fitted wardrobes, complete with en suite shower-room including sleek vanity unit and feature mirror. Bedroom 2 includes fitted wardrobes, with two further bedrooms and a family bathroom located on this level presenting an excellent family home.



First Floor

Bedroom 1	4.22m x 2.97m	13' 8" x 9' 7"
En suite	2.07m x 1.82m	6' 8" x 6' 0"
Bedroom 2	2.70m x 2.67m	8' 9" x 8' 8"
Bedroom 3	3.11m x 2.10m	10' 2" x 6' 9"
Bedroom 4	3.17m x 2.71m	10' 4" x 8' 9"
Bathroom	3.11m x 1.48m	10' 2" x 4' 9"



Ground Floor

Lounge	4.20m x 4.11m	13' 8" x 13' 4"
Dining/Kitchen	6.45m x 2.84m	21' 2" x 9' 3"
Utility	1.83m x 1.41m	6' 0" x 4' 6"
Cloakroom	2.24m x 1.41m	7' 3" x 4' 6"

Specification

Kitchen

- High quality kitchen supplied and fitted by Ashley Ann
- Worktop with matching upstand
- A range of integrated Bosch appliances including:
 - Stainless steel electric oven
 - Frameless 4 ring ceramic hob
 - Fridge freezer
- Stainless steel extractor hood
- Glass splashback behind hob
- Stainless steel inset sink with 1.5 bowl
- Under wall-unit lighting

Utility Room

- Worktop with matching upstand

Cloakroom

- Contemporary sanitary ware from Ideal Standard:
 - Wash hand basin with mixer tap complete with clicker waste
 - Close coupled WC and cistern with push button flush
- Ceramic wall tiling above wash hand basin, finished with a chrome tile trim
- Feature mirror

Bathroom

- Contemporary sanitary ware from Ideal Standard:
 - Semi-recessed wash hand basin with chrome mixer tap and clicker waste
 - Back to wall WC with concealed cistern and push button flush
 - Arc bath with thermostatic pillar mounted bath shower mixer and curved bath screen
- Ceramic wall tiling above vanity unit and full height above bath and around shower, finished with a chrome tile trim
- Feature mirror
- Vanity units create a sleek finish to the contemporary bathroom

En suite

- Contemporary sanitary ware from Ideal Standard:
 - Semi-recessed wash hand basin with chrome mixer tap and clicker waste
 - Back to wall WC with concealed cistern and push button flush
 - Mira Jump electric shower
 - Shower tray and sliding shower screen/door to suit
- Ceramic wall tiling above wash hand basin and full height to shower, finished with a chrome tile trim
- Feature mirror
- Vanity units create a sleek finish to the contemporary en-suite

Internal Finishes and Decoration

- Premdor white modern ladder moulded internal doors
- Premdor white smooth 5-light glazed doors to the lounge and kitchen
- Polished chrome ironmongery
- Push-up ceiling hatch providing loft access
- Walls finished with matt emulsion in light grey, apart from the kitchen, bathroom, en suite and cloakroom which will be white
- Ceilings finished with matt emulsion in off white
- Woodwork finished in brilliant white
- Staircase finished with white painted spindles and oak handrail

Fitted wardrobes and Storage

- Sliding mirrored wardrobe doors, where applicable
- Shelf and chrome hanging rail to wardrobes, where applicable
- Storage cupboards located in hall and landing

Electrics and Connectivity

- TV/satellite point in lounge and TV point to bedroom 1
- USB double socket in kitchen and bedroom 1
- Telephone point installed
- Fibre broadband to the property (internet speed subject to supplier – customer to arrange supplier/connection)
- Hard-wired mains smoke and heat alarms installed, with battery back-up
- Pendant light fittings throughout with low energy bulbs fitted
- Door bell fitted at front door

Security and External Details

- Front door with multi-point locking system, spy viewer and letter plate
- French doors with multi-point locking system opening on to patio
- Chrome ironmongery on exterior doors
- Exterior lights to front and rear
- Double glazed windows with lockable handles, with obscured glazing to bathroom and en suite
- PVCu cladding system on fascias and soffits
- Marley Deepflow guttering and downpipes
- Driveway and paving to front door
- Turfed gardens to front and rear
- 1800mm timber screen fencing between rear gardens and at rear boundary
- External water tap
- Brabantia rotary drier

Plumbing and Heating

- Air source heat pump

Choice of inclusions is subject to construction stage. We operate a policy of continuous product development, and specification, floor plans and individual features such as windows, garages and elevational treatments may vary from time to time, as may heating and electrical layouts. Consequently these particulars should be treated as general guidance only and cannot be relied upon as accurately describing any of the areas or items prescribed. Nor do they constitute a contract, part of a contract or a warranty. All images are used for illustrative purposes only. June 2024.

THE MAPLES

The Tarvie

4 bedroom detached home





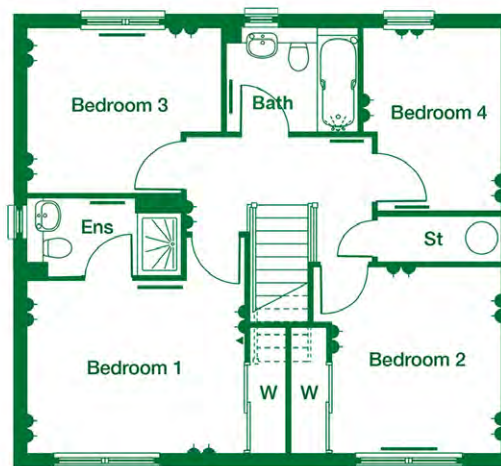
THE TARVIE

4 bedroom detached home

The Tarvie is a stunning 4 bedroom property which is beautifully designed and well thought out.

An open plan luxury kitchen/dining area features French doors leading to the rear turfed garden. In addition, there is a useful utility room with a door leading outside. The hallway leads to the lounge and separate front aspect family room. A cloakroom and handy storage cupboard are also located on the ground floor.

The first floor has four bedrooms, with bedroom 1 featuring an en suite shower room. Additionally, there is a family bathroom and storage cupboard on the first floor.



First Floor

Bedroom 1	3.83m x 3.06m	12' 6" x 10' 0"
En suite	2.71m x 1.35m	8' 9" x 4' 4"
Bedroom 2	3.30m x 2.90m	10' 8" x 9' 5"
Bedroom 3	3.42m x 2.90m	11' 2" x 9' 5"
Bedroom 4	3.20m x 2.37m	10' 5" x 7' 8"
Bathroom	2.27m x 1.81m	7' 4" x 6' 0"



Ground Floor

Lounge	4.68m x 3.19m	15' 4" x 10' 5"
Dining/Kitchen	8.27m x 2.70m	27' 1" x 8' 9"
Family	2.81m x 2.73m	9' 2" x 9' 0"
Utility	1.90m x 1.85m	6' 2" x 6' 1"
Cloakroom	1.85m x 1.36m	6' 1" x 4' 5"

Specification

Kitchen

- High quality kitchen supplied and fitted by Ashley Ann
- Worktop with matching upstand
- A range of integrated Bosch appliances including:
 - Stainless steel electric double oven
 - Frameless 4 ring ceramic hob
 - Fridge freezer
 - Dishwasher
- Stainless steel extractor hood
- Glass splashback behind hob
- Stainless steel inset sink with 1.5 bowl
- Under wall-unit lighting

Utility Room

- Stainless steel inset sink with single bowl
- Worktop with matching upstand

Cloakroom

- Contemporary sanitary ware from Ideal Standard:
 - Wash hand basin with mixer tap complete with clicker waste
 - Close coupled WC and cistern with push button flush
- Ceramic wall tiling above wash hand basin, finished with a chrome tile trim
- Feature mirror

Bathroom

- Contemporary sanitary ware from Ideal Standard:
 - Semi-recessed wash hand basin with chrome mixer tap and clicker waste
 - Back to wall WC with concealed cistern and push button flush
 - Arc bath with thermostatic pillar mounted bath shower mixer and curved bath screen
- Ceramic wall tiling above vanity unit and full height above bath and around shower, finished with a chrome tile trim
- Feature mirror
- Vanity units create a sleek finish to the contemporary bathroom

En suite

- Contemporary sanitary ware from Ideal Standard:
 - Semi-recessed wash hand basin with chrome mixer tap and clicker waste
 - Back to wall WC with concealed cistern with push button flush
 - Mira Jump electric shower
 - Shower tray and sliding shower screen/door to suit
 - Ceramic wall tiling above wash hand basin and full height to shower, finished with a chrome tile trim
 - Feature mirror
- Vanity units create a sleek finish to the contemporary en-suite

Internal Finishes and Decoration

- Premdor white modern ladder moulded internal doors
- Premdor white smooth 5-light glazed doors to the lounge and kitchen
- Polished chrome ironmongery
- Push-up ceiling hatch providing loft access
- Walls finished with matt emulsion in light grey, apart from the kitchen, bathroom, en suite and cloakroom which will be white
- Ceilings finished with matt emulsion in off white
- Woodwork finished in brilliant white
- Staircase finished with white painted spindles and oak handrail

Fitted wardrobes and Storage

- Sliding mirrored wardrobe doors, where applicable
- Shelf and chrome hanging rail to wardrobes, where applicable
- Storage cupboards located in hall and landing

Electrics and Connectivity

- TV/satellite point in lounge and TV point to bedroom 1
- USB double socket in kitchen and bedroom 1
- Telephone point installed
- Fibre broadband to the property (internet speed subject to supplier – customer to arrange supplier/connection)
- Hard-wired mains smoke and heat alarms installed, with battery back-up
- Pendant light fittings throughout with low energy bulbs fitted
- Door bell fitted at front door

Security and External Details

- Front door with multi-point locking system, spy viewer and letter plate
- Rear door with multi-point locking system in manor half panel style with obscure glazing
- French doors with multi-point locking system opening on to patio
- Chrome ironmongery on exterior doors
- Exterior lights to front and rear
- Double glazed windows with lockable handles, with obscured glazing to bathroom and en suite
- PVCu cladding system on fascias and soffits
- Marley Deepflow guttering and downpipes
- Driveway and paving to front door
- Turfed gardens to front and rear
- 1800mm timber screen fencing between rear gardens and at rear boundary
- External water tap
- Brabantia rotary drier

Plumbing and Heating

- Air source heat pump

Choice of inclusions is subject to construction stage. We operate a policy of continuous product development, and specification, floor plans and individual features such as windows, garages and elevational treatments may vary from time to time, as may heating and electrical layouts. Consequently these particulars should be treated as general guidance only and cannot be relied upon as accurately describing any of the areas or items prescribed. Nor do they constitute a contract, part of a contract or a warranty. All images are used for illustrative purposes only. September 2024.

THE MAPLES

The Etive

4 bedroom detached home with garage



www.tulloch-homes.com

 Tulloch Homes



THE ETIVE

4 bedroom detached home with garage

The Etive is an exceptional home ideal for family living comprising 4 bedrooms and an integral garage.

The open plan Ashley Ann kitchen/dining room features a selection of Bosch appliances and benefits from French doors leading to the turfed rear garden. On the ground floor, you will also find a front aspect lounge, as well as a cloakroom and utility room.

Upstairs, bedroom 1 benefits from en suite shower room along with fitted wardrobe facilities. The family bathroom can also be found on this level, which features a shower over the bath and fitted vanity units to create a sleek and modern finish.



First Floor

Bedroom 1	3.64m x 3.29m	12' 0" x 10' 8"
En suite	2.37m x 2.04m	7' 8" x 6' 7"
Bedroom 2	3.22m x 3.20m	10' 6" x 10' 5"
Bedroom 3	3.59m x 2.77m	11' 8" x 9' 1"
Bedroom 4	3.13m x 2.80m	10' 3" x 9' 2"
Bathroom	2.10m x 2.10m	6' 9" x 6' 9"



Ground Floor

Lounge	4.78m x 3.29m	15' 7" x 10' 8"
Dining/Kitchen	5.44m x 3.48m	17' 8" x 11' 4"
Utility	2.27m x 1.56m	7' 4" x 5' 1"
Cloakroom	2.27m x 1.08m	7' 4" x 3' 5"

Specification

Kitchen

- High quality kitchen supplied and fitted by Ashley Ann
- Worktop with matching upstand
- A range of integrated Bosch appliances including:
 - Stainless steel electric double oven
 - Frameless 4 ring ceramic hob
 - Fridge freezer
 - Dishwasher
- Stainless steel extractor hood
- Glass splashback behind hob
- Stainless steel inset sink with 1.5 bowl
- Under wall-unit lighting

Utility Room

- Worktop with matching upstand
- Stainless steel inset sink with single bowl

Cloakroom

- Contemporary sanitary ware from Ideal Standard:
 - Wash hand basin with mixer tap complete and clicker waste
 - Close coupled WC and cistern with push button flush
- Ceramic wall tiling above wash hand basin, finished with a chrome tile trim
- Feature mirror

Bathroom

- Contemporary sanitary ware from Ideal Standard:
 - Semi-recessed wash hand basin with chrome mixer tap and clicker waste
 - Back to wall WC with concealed cistern and push button flush
 - Arc bath with thermostatic pillar mounted bath shower mixer and curved bath screen
- Ceramic wall tiling above vanity unit and full height above bath and around shower, finished with a chrome tile trim
- Feature mirror
- Vanity units create a sleek finish to the contemporary bathroom

En suite

- Contemporary sanitary ware from Ideal Standard:
 - Semi-recessed wash hand basin with chrome mixer tap and clicker waste
 - Back to wall WC with concealed cistern and push button flush
 - Mira Jump electric shower
 - Shower tray and pivot shower screen/door to suit
- Ceramic wall tiling above wash hand basin and full height to shower, finished with a chrome tile trim
- Feature mirror
- Vanity units create a sleek finish to the contemporary en-suite

Internal Finishes and Decoration

- Premdor white modern ladder moulded internal doors
- Premdor white smooth 5-light glazed doors to the lounge and kitchen
- Polished chrome ironmongery
- Push-up ceiling hatch providing loft access
- Walls finished with matt emulsion in light grey, apart from the kitchen, bathroom, en suite and cloakroom which will be white
- Ceilings finished with matt emulsion in off white
- Woodwork finished in brilliant white
- Staircase finished with white painted spindles and oak handrail

Fitted wardrobes and Storage

- Sliding mirrored wardrobe doors, where applicable
- Shelf and chrome hanging rail to wardrobes, where applicable
- Storage cupboards located in hall and landing

Electrics and Connectivity

- TV/satellite point in lounge and TV point to bedroom 1
- USB double socket in kitchen and bedroom 1
- Telephone point installed
- Fibre broadband to the property (internet speed subject to supplier – customer to arrange supplier/connection)
- Hard-wired mains smoke and heat alarms installed, with battery back-up
- Pendant light fittings throughout with low energy bulbs fitted
- Door bell fitted at front door

Security and External Details

- Front door with multi-point locking system, spy viewer and letter plate
- French doors with multi-point locking system opening onto patio
- Chrome ironmongery on exterior doors
- Roller shutter garage door
- Exterior lights to front and rear
- Double glazed windows with lockable handles, with obscured glazing to bathroom, en suite and WC
- PVCu cladding system on fascias and soffits
- Marley Deepflow guttering and downpipes
- Driveway and paving to front door
- Turfed gardens to front and rear
- 1800mm timber screen fencing between rear gardens and at rear boundary
- External water tap
- Brabantia rotary drier

Plumbing and Heating

- Air source heat pump

Choice of inclusions is subject to construction stage. We operate a policy of continuous product development, and specification, floor plans and individual features such as windows, garages and elevational treatments may vary from time to time, as may heating and electrical layouts. Consequently these particulars should be treated as general guidance only and cannot be relied upon as accurately describing any of the areas or items prescribed. Nor do they constitute a contract, part of a contract or a warranty. All images are used for illustrative purposes only. February 2025.

THE MAPLES

The Lochalsh

4 bedroom detached home with garage



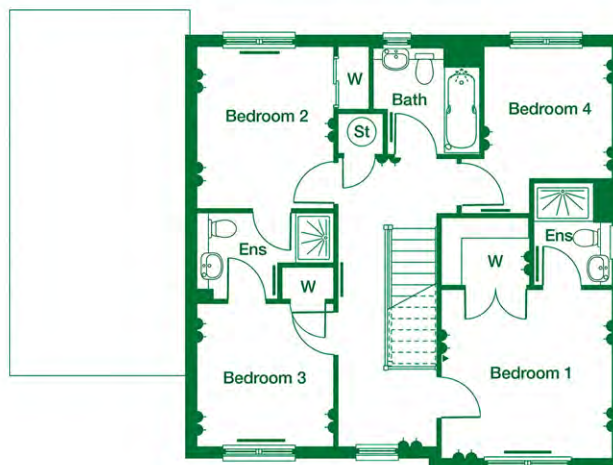


THE LOCHALSH

4 bedroom detached home with garage

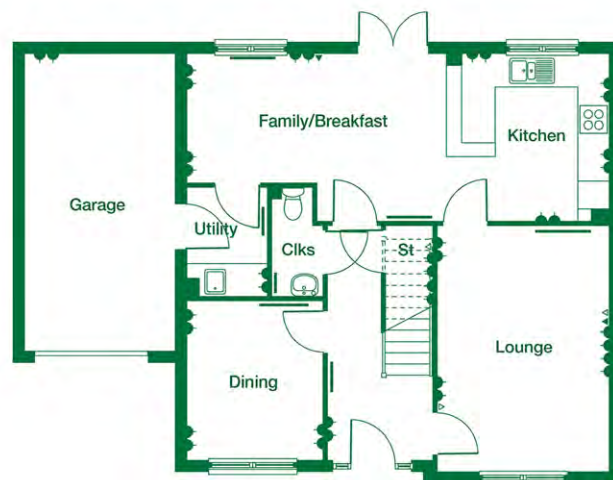
The Lochalsh is an exceptional 4 bedroom detached family home providing fantastic accommodation on two floors. The lounge gives access to the impressive kitchen/family/breakfast area which includes integrated Bosch appliances. The breakfast area leads to the rear garden, offering a family focused space. A separate, front aspect dining room is located off the hall. Also on the ground floor is a WC and utility room with access to the integral garage.

Upstairs are four bedrooms, with the main bedroom featuring a walk in wardrobe and en suite shower room. Bedrooms 2 and 3 share en suite facilities and include fitted wardrobes. Also on the upper floor is the family bathroom. Storage cupboards are provided on both the ground and first floor levels.



First Floor

Bedroom 1	3.47m x 3.42m	11' 4" x 11' 2"
En suite	2.06m x 1.60m	6' 8" x 5' 2"
Bedroom 2	3.29m x 2.79m	10' 8" x 9' 2"
En suite	2.79m x 1.75m	9' 2" x 5' 7"
Bedroom 3	2.90m x 2.79m	9' 5" x 9' 2"
Bedroom 4	2.68m x 2.60m	8' 8" x 8' 5"
Bathroom	2.18m x 2.16m	7' 2" x 7' 1"



Ground Floor

Lounge	4.91m x 3.47m	16' 1" x 11' 4"
Dining/Kitchen	3.20m x 2.70m	10' 5" x 8' 9"
Family/Breakfast/Kitchen	8.48m x 3.33m	27' 8" x 11' 0"
Utility	2.16m x 1.59m	7' 1" x 5' 2"
Cloakroom	2.16m x 1.01m	7' 1" x 3' 3"

Specification

Kitchen

- High quality kitchen supplied and fitted by Ashley Ann
- Worktop with matching upstand
- A range of integrated Bosch appliances including:
 - Stainless steel electric double oven
 - Frameless 4 ring ceramic hob
 - Fridge freezer
 - Dishwasher
- Stainless steel extractor hood
- Glass splashback behind hob
- Stainless steel inset sink with 1.5 bowl
- Under wall-unit lighting

Utility Room

- Worktop with matching upstand
- Stainless steel inset sink with single bowl

Cloakroom

- Contemporary sanitary ware from Ideal Standard:
 - Wash hand basin with mixer tap complete and clicker waste
 - Close coupled WC and cistern with push button flush
- Ceramic wall tiling above wash hand basin, finished with a chrome tile trim
- Feature mirror

Bathroom

- Contemporary sanitary ware from Ideal Standard:
 - Semi-recessed wash hand basin with chrome mixer tap and clicker waste
 - Back to wall WC with concealed cistern and push button flush
 - Arc Bath with dual control two tap hole bath filler taps and bath panels to suit
- Ceramic tiling splashback above vanity unit and bath, finished with chrome tile trim
- Feature mirror
- Vanity units create a sleek finish to the contemporary bathroom

En suites

- Contemporary sanitary ware from Ideal Standard:
 - Semi-recessed wash hand basin with chrome mixer tap and clicker waste
 - Back to wall WC with concealed cistern and push button flush
 - Shower tray and sliding shower screen/door to suit
- Methven Kiri Lever thermostatic shower with handset and chrome edge riser rail in main bedroom en suite
- Mira Jump electric shower in second en suite
- Ceramic wall tiling above wash hand basin and full height to shower, finished with a chrome tile trim
- Feature mirror
- Vanity units create a sleek finish to the contemporary en-suites

Internal Finishes and Decoration

- Premdor white modern ladder moulded internal doors
- Premdor white smooth 5-light glazed doors to the lounge and kitchen
- Polished chrome ironmongery
- Push-up ceiling hatch providing loft access
- Walls finished with matt emulsion in light grey, apart from kitchen, cloakroom, bathroom and en suites, which will be white
- Ceilings finished with matt emulsion in off white
- Woodwork finished in brilliant white
- Staircase finished with white painted spindles and oak handrail

Fitted wardrobes and Storage

- Walk in wardrobe to main bedroom
- Sliding mirrored wardrobe doors, where applicable
- Shelf and chrome hanging rail to wardrobes, where applicable
- Storage cupboards located in hall and landing

Electrics and Connectivity

- TV/satellite point in lounge and TV point to bedroom 1
- USB double socket in kitchen and bedroom 1
- Telephone point installed
- Fibre broadband to the property (internet speed subject to supplier – customer to arrange supplier/connection)
- Hard-wired mains smoke and heat alarms installed, with battery back-up
- Pendant light fittings throughout with low energy bulbs fitted
- Door bell fitted at front door

Security and External Details

- Front door with multi-point locking system, spy viewer and letter plate
- French doors with multi-point locking system opening on to patio
- Chrome ironmongery on exterior doors
- Exterior lights to front and rear
- Roller shutter garage door
- Double glazed windows with lockable handles, with obscured glazing to bathroom and en suite
- PVCu cladding system on fascias and soffits
- Marley Deepflow guttering and downpipes
- Driveway and paving to front door
- Turfed gardens to front and rear
- 1800mm timber screen fencing between rear gardens and at rear boundary
- External water tap
- Brabantia rotary drier

Plumbing and Heating

- Air source heat pump

Choice of inclusions is subject to construction stage. We operate a policy of continuous product development, and specification, floor plans and individual features such as windows, garages and elevational treatments may vary from time to time, as may heating and electrical layouts. Consequently these particulars should be treated as general guidance only and cannot be relied upon as accurately describing any of the areas or items prescribed. Nor do they constitute a contract, part of a contract or a warranty. All images are used for illustrative purposes only. June 2024.

THE MAPLES

The Rannoch

4 bedroom detached home with double garage





THE RANNOCH

4 bedroom detached home
with double garage

The Rannoch 4 bedroom detached home is a striking property benefiting from a detached double garage.

This remarkable family home boasts superb accommodation throughout. The entrance hall leads to the lounge, with glazed double doors giving access to the dining room. A fully integrated kitchen/diner offers access to the rear garden and allows room for entertaining. There is a useful utility room and cloakroom located on the ground floor, together with a versatile study which could offer the facility of a downstairs bedroom.

The upper floor gives access to bedroom one, which benefits from a walk in wardrobe and en-suite shower room. Bedrooms two and three share Jack and Jill en-suite facilities and there is also a fourth bedroom and family bathroom on the upper landing.



First Floor

Bedroom 1	3.78m x 3.53m	12' 4" x 11' 6"
En suite	2.16m x 1.59m	7' 1" x 5' 2"
Bedroom 2	3.49m x 2.97m	11' 5" x 9' 7"
En suite	1.80m x 1.75m	5' 9" x 5' 7"
Bedroom 3	3.08m x 3.0m	10' 1" x 9' 8"
Bedroom 4	3.08m x 2.73m	10' 1" x 9' 0"
Bathroom	2.10m x 1.92m	6' 9" x 6' 3"



Ground Floor

Lounge	4.91m x 3.76m	16' 1" x 12' 3"
Dining/Kitchen	3.36m x 2.96m	11' 0" x 9' 7"
Family/Breakfast/Kitchen	6.39m x 4.01m	21' 0" x 13' 2"
Study	3.42m x 2.50m	11' 2" x 8' 2"
Utility	1.91m x 1.90m	6' 3" x 6' 2"
Cloakroom	1.90m x 1.41m	6' 2" x 4' 6"

Specification

Kitchen

- High quality kitchen supplied and fitted by Ashley Ann
- Worktop with matching upstand
- A range of integrated Bosch appliances including:
 - Stainless steel electric double oven
 - Frameless 4 ring ceramic hob
 - Fridge freezer
 - Dishwasher
- Stainless steel extractor hood
- Glass splashback behind hob
- Stainless steel inset sink with 1.5 bowl
- Under wall-unit lighting

Utility Room

- Worktop with matching upstand
- Stainless steel inset sink with single bowl

Cloakroom

- Contemporary sanitary ware from Ideal Standard:
 - Wash hand basin with mixer tap complete with clicker waste
 - Close coupled WC and cistern with push button flush
- Ceramic wall tiling above wash hand basin, finished with a chrome tile trim
- Feature mirror

Bathroom

- Contemporary sanitary ware from Ideal Standard:
 - Semi-recessed wash hand basin with chrome mixer tap and clicker waste
 - Back to wall WC with concealed cistern and push button flush
 - Arc Bath with dual control two tap hole bath filler taps and bath panels to suit
- Ceramic tiling splashback above vanity unit and bath, finished with chrome tile trim
- Feature Mirror
- Vanity units create a sleek finish to the contemporary bathroom

En suites

- Contemporary sanitary ware from Ideal Standard:
 - Semi-recessed wash hand basin with chrome mixer tap and clicker waste
 - Back to wall WC with concealed cistern and push button flush
 - Shower tray and sliding shower screen/door to suit
- Methven Kiri Lever thermostatic shower with handset and chrome edge riser rail in main bedroom en suite
- Mira Jump electric shower in second en suite
- Ceramic wall tiling above wash hand basin and full height to shower, finished with a chrome tile trim
- Feature mirror
- Vanity units create a sleek finish to the contemporary en-suite

Internal Finishes and Decoration

- Premdor white modern ladder moulded internal doors
- Premdor white smooth 5-light glazed doors to the lounge and kitchen
- Polished chrome ironmongery
- Push-up ceiling hatch providing loft access
- Walls finished with matt emulsion in light grey, apart from kitchen, cloakroom, bathroom and en suites, which will be white
- Ceilings finished with matt emulsion in off white
- Woodwork finished in brilliant white
- Staircase finished with white painted spindles and oak handrail

Fitted wardrobes and Storage

- Walk in wardrobe to main bedroom
- Sliding mirrored wardrobe doors, where applicable
- Shelf and chrome hanging rail toward robes, where applicable
- Storage cupboards located in hall and landing

Electrics and Connectivity

- TV/satellite point in lounge and TV point to bedroom 1
- USB double socket in kitchen and bedroom 1
- Telephone point installed
- Fibre broadband to the property (internet speed subject to supplier – customer to arrange supplier/connection)
- Hard-wired mains smoke and heat alarms installed, with battery back-up
- Pendant light fittings throughout with low energy bulbs fitted
- Doorbell fitted at front door

Security and External Details

- Front door with multi-point locking system, spy viewer and letter plate
- French doors with multi-point locking system opening on to patio
- Chrome ironmongery on exterior doors
- Exterior lights to front and rear
- Roller shutter garage door
- Double glazed windows with lockable handles, with obscured glazing to en suites
- PVCu cladding system on fascias and soffits
- Marley Deepflow guttering and downpipes
- Driveway and paving to front door
- Turfed gardens to front and rear
- 1800mm timber screen fencing between rear gardens and at rear boundary
- External water tap
- Brabantia rotary drier

Plumbing and Heating

- Air source heat pump

Choice of inclusions is subject to construction stage. We operate a policy of continuous product development, and specification, floor plans and individual features such as windows, garages and elevational treatments may vary from time to time, as may heating and electrical layouts. Consequently these particulars should be treated as general guidance only and cannot be relied upon as accurately describing any of the areas or items prescribed. Nor do they constitute a contract, part of a contract or a warranty. All images are used for illustrative purposes only. June 2024.

The Maples Ness Side

www.tulloch-homes.com



-  **The Lochalsh**
4 bedroom detached home with garage.
-  **The Etive**
4 bedroom detached home with garage.
-  **The Rannoch**
4 bedroom detached home with double garage.
-  **The Calder**
3 bedroom detached home.
-  **The Tweed**
4 bedroom detached home.
-  **The Affric**
3 bedroom detached home with garage.
-  **The Orrin**
2 bedroom terraced home & semi detached home.
-  **The Torrin**
3 bedroom semi detached home.
-  **The Teviot**
2 bedroom terraced home.
-  **The Tarvie**
4 bedroom detached home.
-  **The Corran**
3 bedroom semi-detached home.

*Denotes mirrored house type

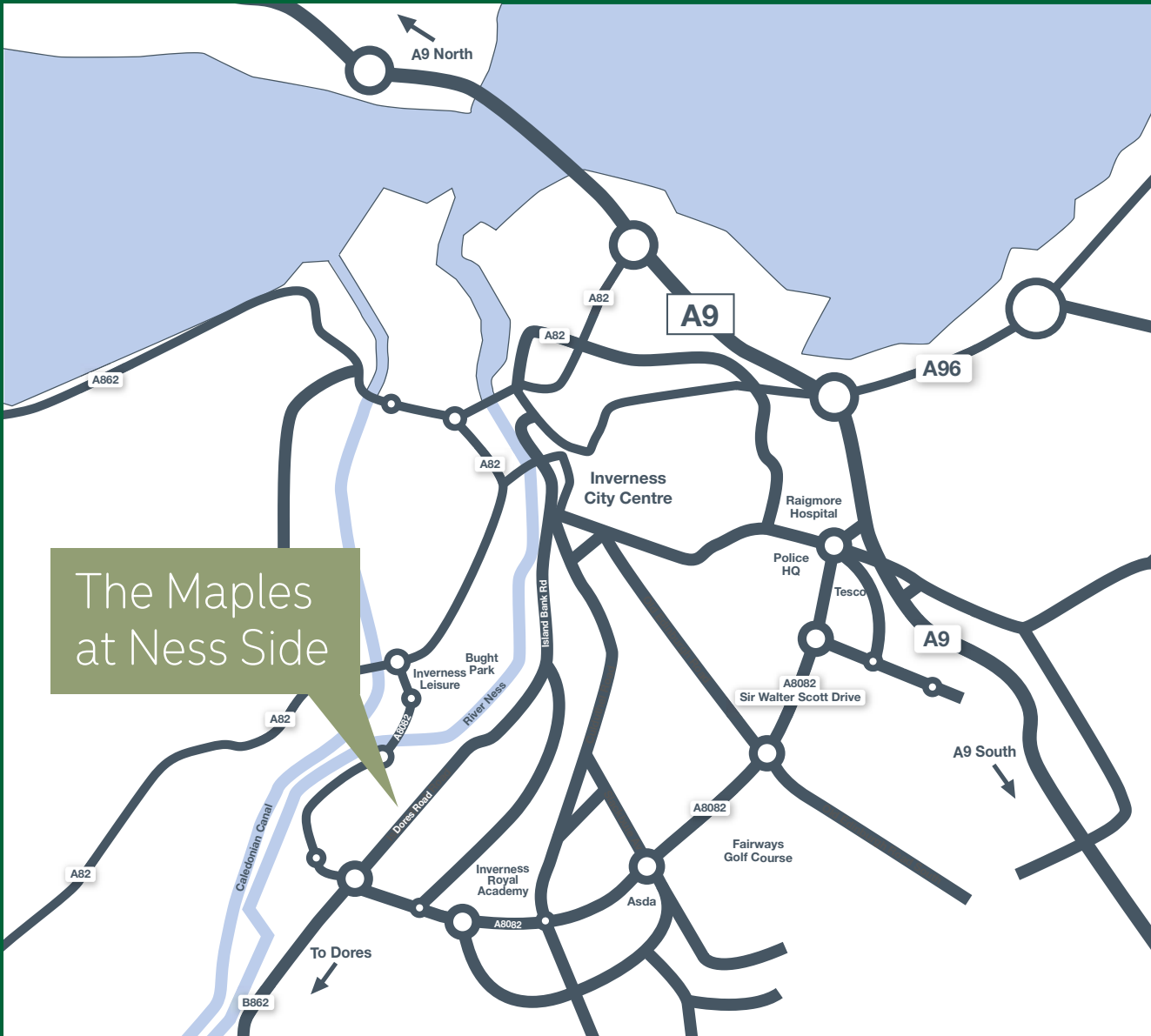
The Maples on SatNav: IV2 6HR

These particulars are for illustration only. We operate a policy of continuous product development, and specification and individual features such as windows, garages and elevational treatments may vary from time to time, as may heating and electrical layouts. Consequently these particulars should be treated as general guidance only and cannot be relied upon as accurately describing any of the areas or items. Nor do they constitute a contract, part of a contract or a warranty. We make no guarantees about the tenure of any homes sold on each development and they are subject to change without consultation.

The Maples Ness Side

www.tulloch-homes.com





Sat Nav: IV2 6HR

Directions

The Maples at Ness Side is located at Morar Street, off the new A8082 West Link road, Inverness.



Stoneyfield House, Stoneyfield Business Park, Inverness IV2 7PA
Email: hello@tulloch-homes.com Tel: 01463 229300



The images of interiors used in this brochure are of typical Tulloch Homes.